



**SPEARS**  
CONSTRUCTION SUPPLY

# PRODUCT LINE CARD

*WE CARRY THE  
**BRANDS**  
**YOU TRUST***



TOOLS | HARDWARE | FASTENERS | ACCESSORIES | SAFETY | TOOL RENTAL

[www.SPEARSONLINE.com](http://www.SPEARSONLINE.com)





## JOBSITE TRAINING & CLASSES

Comprehensive training, when and where you need it. The key to effective training is practical, hands-on experience. We offer a full range of fall protection, Silica, and many more trainings and courses on-site from our certified training specialists. Reach out to schedule the training you need with SCS.



## SAME DAY / NEXT DAY DELIVERY

We offer Same day or Next day delivery for many of our products to reduce your overhead, mobilize quickly and keep your team working.



## E-BUSINESS SOLUTIONS

Our VMI and Job Startup Rental programs can help reduce your job costs and improve your team's efficiency & reduce transaction and procurement costs and enhance the overall ease of doing business with us.



## ON STAFF SPECIALISTS

Our dedicated Product Specialists are here to assist your team with the latest industry codes, standards and requirements.



## SAFETY TRAINING SERVICES

- ✓ Fall Protection training & gear inspections
- ✓ Ladder safety training & inspections
- ✓ Respirator fit testing
- ✓ Rigging and sling inspections
- ✓ Powder Actuated training

## FIRESTOPPING SERVICES

### WHAT WE CAN DO FOR YOU

- ✓ Submittals: For new jobs, Remodels, for All Trades
- ✓ Fire Stopping installers training & certification
- ✓ Engineering Judgements, for non-typical UL applications
- ✓ Onsite Consultation
- ✓ Preferred installation methods
- ✓ Cost effective product selection

**3M**

**STL** Specified Technologies Inc.

## SERVICE REPAIR

### WHAT WE CAN DO FOR YOU

We repair a wide variety of corded, cordless, and gas tools, along with air tools and anything we get parts for with a collective 33 years of experience in repair and warranty work.

## CALIBRATION/CERTIFICATION

### WHAT WE CAN DO FOR YOU

Proto, Gearwrench and our support of the torquing related brands.



**GU GEARWRENCH**



**GUARDIAN**  
FALL PROTECTION

**TRADE IT IN.  
GET CREDIT.**

Trade in your fall protection equipment for credit towards **NEW** Guardian Fall Protection gear.

Ask your SCS Rep for Details.



**ExoFit NEX™**

NOW YOU CAN GET THE SAME COMFORT OF THE EXOFIT NEX™ HARNESS WITH THREE NEW TIME-SAVING FEATURES:

- AN INTEGRATED EASY-LINK SRL ADAPTER,
- A FIXED BACK D-RING AND
- AUTO-RESETTING LANYARD KEEPERS.



**ADVANTAGE**  
SALES & SUPPLY CO., INC.

**aerosmith**  
FABRICATING & WELDING

**AERVOE**

**AGG NOW**  
INDUSTRIAL STRENGTH PARTNERSHIP

**Albion**  
SPECIALTY SOLUTIONS

**AMES**

**BARTELL GLOBAL**

**BOSTITCH**

**BUFFALO**

**cendrex**

**CHAMPION**  
EQUIPMENT & SUPPLY

**Chem-Restore**

**ClarkDietrich**  
EQUIPMENT SPECIALISTS

**CLC**  
WORK CLOTHES

**CUSTOMER TRIT**

**DAP**

**DAYTON SUPERIOR**

**DIAMOND PRODUCTS**

**DRUTEC**  
EQUIPMENT & SUPPLY

**EAGLE**

**ELCO**

**EMERSON**

**EURO DRY**

**FALLTECH**  
FALL PROTECTION SPECIALISTS

**FIRST AID ONLY**

**Flomax International**  
Fiberglass

**freud**

**FLUKE**

**GENERAC**

**Henkel**

**ICP**  
EQUIPMENT & SUPPLY

**ipg**  
intertape polymer group

**INTERCORP**  
STRONG-POINT

**IQ POWER TOOLS**

**IRWIN TOOLS**

**ITP Commercial Construction**

**KARP**

**IKESON**  
MAKE YOUR MARK

**KRAFT TOOL CO.**

**KRYLON**  
INDUSTRIAL

**LiftAll**

**Magnolia Brush**  
Manufacturing Co. • 17000000

**Makita**

**MAR-MAC**

**MARSHALLS**

**MAX**

**METALTECH**

**Midwest**

**MORSE**

**NEW**

**NORSEMAN**  
DRILL & TOOL  
America's Finest High-Speed Steel Cutting Tools

**NORTON**  
GRINDING WHEELS

**OCM**

**ORS-Nasco**

**PRIME SOURCE**  
EQUIPMENT & SUPPLY

**Proffered**

**PROLINE**  
PRODUCTS INC.

**PRO-TWO**

**RADIANS**

**REED**  
PIPE TOOLS & MORE  
SINCE 1898

**ROLAIR**  
SYSTEMS

**SENCO**

**Shurtape**  
TAPE & MORE TAPE

**SPECTRA**  
FABRIC

**SPOTNAILS**

**STABILA**

**STURFEST INC.**

**TOPCON**

**Toter PRO**  
Built for Extremes

**tp**

**TRI**  
CLUT

**UNITED**  
R. ABRASIVES  
SAFETY

**VOLTEC**  
POWER & LIGHTING

**WACKER NEUSON**

**WERNER**

**W. R. MEADOWS**  
SEAIGHT

**W. R. MEADOWS**  
SEAIGHT

ABRASIVES | ACCESS DOORS/VENTS/ROOF ACCESS | ADHESIVES/SEALANTS/TAPE | AIR & PNEUMATIC TOOLS | CLEANING/WASTE REMOVAL/WASTE STORAGE | CONSTRUCTION FABRICS | DIAMOND PRODUCTS | DRILL BITS & ACCESSORIES  
ELECTRONICS/BATTERIES | EROSION CONTROL/SWPPP | FASTENERS/ANCHORS | FASTENING PINS & INSERTS | HAND TOOLS | HARDWARE SUPPLIES | LADDERS/PLATFORMS/SCAFFOLDING | LEVELING/MEASURING/SURVEYING  
LIGHTING SUPPLIES | LUBRICATION/OILS/GREASE | LUMBER PRODUCTS | FMATERIAL HANDLING/STORAGE/CONTAINMENT | OUTDOOR PRODUCTS | PAINTS/EQUIPMENT/SUPPLIES | POWER TOOL ACCESSORIES | POWER TOOLS  
RADIOS | REFRIGERATION/HVAC/AIR TREATMENT | SAFETY EQUIPMENT & PRODUCTS | SHOP VACUUMS | STRAPPING | FSTRUCTURAL HARDWARE | STRUT/CHANNEL & FITTING | STILES & DETECTABLE WARNING PADS | TILT UP  
TOOL STORAGE/JOBSITE & TRUCK BOXES/TRANSFER TANKS | WATERPROOFING PRODUCTS



# 3M Science. Applied to Life.™

At 3M, we apply science in collaborative ways to improve lives daily.



## KASK

**NEW**  
**ZENITH X2**  
**SAFETY**  
**HELMET**

THE ZENITH X  
GETS A "2"  
AND IS NOW ANSI  
TYPE II CERTIFIED

All around protection  
against impact and  
penetration including  
front, rear, and sides.

**CUSTOMIZATION  
AVAILABLE**



**BEST IN THE WORLD AND  
BEST FOR OUR WORLD**

## DIABLO



## MAJESTIC

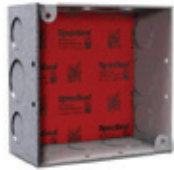
RELIABILITY IN SAFETY

PROTECTING AMERICA'S  
WORKERS FOR 40 YEARS



**GLOVES | BOOTS | HI-VIS JACKETS**

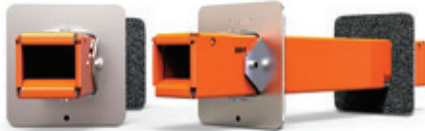
Intumescent Firestop Putty Pad



Box Insert



**EZ-Path**  
Fire-Rated Pathway



**Specified Technologies Inc.**

is an industry leader in developing innovative fire protection systems that help stop the spread of fire, smoke, and hot gases. For 30 years now, our team has worked hand in hand with the construction industry to create simple solutions to complex firestopping problems.

## freud

Precisely the Best.



Freud's full line of high-quality woodworking tools includes saw blades, router bits, shaper cutters, and more.



## CHAMPION

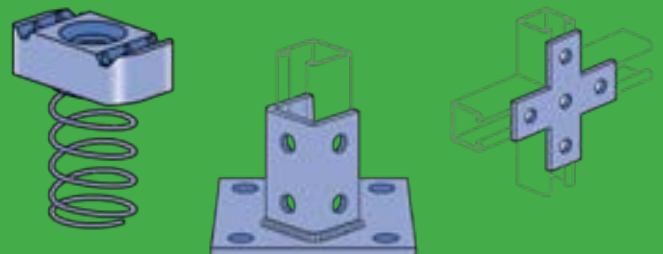
CUTTING TOOL CORP

**Over  
120 Years**  
Of Quality & Innovation

## Atkore

Unistrut

**UNISTRUT®**  
THE ORIGINAL METAL  
FRAMING SYSTEM







GW GEARWRENCH

CRESCENT

CRESCENT  
JOBBOX



CRESCENT  
JOBBOX



#### SITE-VAULT™ SECURITY SYSTEM

The patented system has a full-length steel lock console with 3 locking points & reflective orange lock indicator that shows when the box is locked/unlocked.



## 3-DAY QUICK SHIP!

Orders ship 3-days after order confirmation. Quick ship SKUS must be placed as a separate order.  
\$4,000 minimum order. No Custom Orders. See Rep on qualifying quick-ship SKUS.

GW GEARWRENCH®  
FORGE AHEAD



SPEARS  
CONSTRUCTION SUPPLY

## SERVICE CENTER

OFFERS TOOL REPAIR  
AND CALIBRATION ON  
GEARWRENCH PRODUCTS.





## CUSTOM CORD PROGRAM

### Polar/Solar® Jacket Materials (SJEOW/SEOW)

Southwire's Polar/Solar extension cords are lightweight, extremely abrasion resistant and very flexible at all temperatures down to -58°F

### Vinyl Jacket Materials (SJTW/STW)

14-10 Gauge Cord and 6/3 & 8/1 Temp Power Cords

**NOW OFFERING:** 5,000' minimum run quantity per gauge.

### Custom Extruded Striping

Pick a unique cord color and stripe color combination. The stripe will not wear off over time like a painted stripe. Numerous stock colors mean that you can choose from hundreds of different STRIPES™ cord combinations. Additional charges apply.

### Multiple Outlet Options

NEMA 5-15, NEMA L5-20, Tri-Source™, California-Style 50A, etc.

**UL & CSA OR CUL APPROVAL**  
(EXCLUDING 6/3 & 8/1 CORDS)

**CUSTOM COLORS AVAILABLE**

## JOBSITE OVERHEAD LIGHTING LAYOUT SERVICES

OSHA standard 1926.56(a) requires a job site have 5 foot candles of light on the ground. Southwire can help you with your lighting layout to ensure that you keep your crew safe without overspending on unnecessary lights.

- Keep your jobsite safe with the right amount of light
- Avoid over lighting a space and increasing install time
- Reduce your material spend

### LET SOUTHWIRE LAYOUT YOUR JOBSITE LIGHTING



Reduce job waste with eliminated packaging



Eliminate light fixture assembly time



Increase install speed with custom light fixtures with the perfect cord length



**FULLY CUSTOMIZABLE  
TO FIT YOUR LIGHTING NEEDS!**



**TOPAZ IS NOW  
A PART OF THE  
SOUTHWIRE  
FAMILY**

# RIDGID®



# GREENLEE®



**THE INDUSTRY-LEADING BRANDS FOR  
MECHANICAL, ELECTRICAL, UTILITY, AND PLUMBING TRADES.**



# BOSCH



**THE DEMANDS OF A JOB CAN  
CHANGE QUICKLY. SO CAN OUR TOOL.**

# KLEIN TOOLS®



**AMERICAN  
MANUFACTURING**

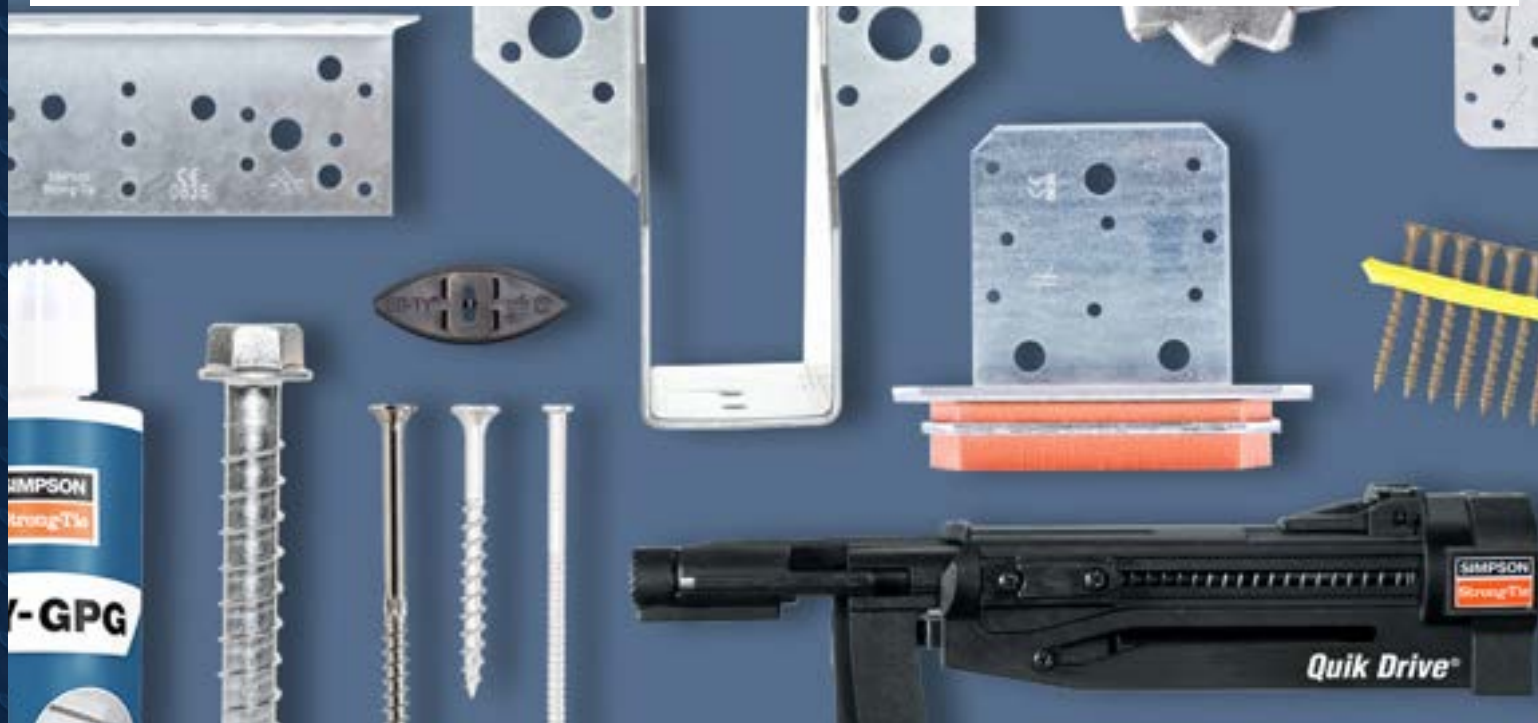


# SIMPSON

## Strong-Tie

## Taking testing and service to new heights.

For over sixty-five years, Simpson Strong-Tie has believed the only true strength is tested strength. That's why our products are rigorously tested and load rated. But we also know every construction project is unique. So we frequently take the added step of offering full-scale application testing. Which means that whatever your design and building specs, we can create real-world conditions in our university-grade labs to make sure our products will work in your project. It's just another example of how we exceed other manufacturers' practices to ensure your success. From design services to technical support to cutting-edge software — like Anchor Designer™ — we're uncompromising in our quest to help you design the best solution for your building challenges.



### DRIVEN BY QUALITY CHOSEN BY PROFESSIONALS™

PROFESSIONAL-GRADE CONSTRUCTION FASTENERS

Head-stamped and ICC-approved

High carbon content points

Unique thread designs

Broad variety - 17 styles of screws

Package size options



## INTERCORP



Professional-Grade Fasteners

## Zero to Fastened in Seconds!

**STRONG-POINT**®

*A quality construction project requires precision, speed and fasteners that perform beyond what is expected. Your reputation depends on it. Kill it when you drill it® with Strong-Point professional grade construction fasteners.*





**MOTOROLA RADIO  
IN-HOUSE PROGRAMMING  
AVAILABLE!**



**TOOL BAG  
CUSTOMIZATION  
BUILD YOUR  
CUSTOM KIT**



**DEWALT**

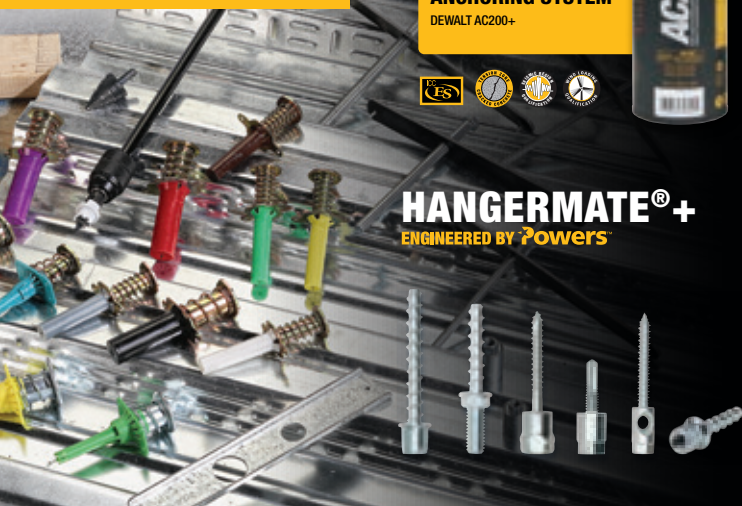
**ANCHORS & FASTENERS**

**NEW  
COLD WEATHER  
ACRYLIC ADHESIVE  
ANCHORING SYSTEM**

DEWALT AC200+



**HANGER MATE®+**  
ENGINEERED BY **Powers**



**Threaded Rod**

**Materials**

- F1554 GR 36
- A193 B7 Threaded Rod
- A307 Threaded Rod Plain
- A307 Threaded Rod Zinc
- A307 Threaded Rod Hot Dip Galv.
- Stainless Steel 18-8
- Stainless Steel 316

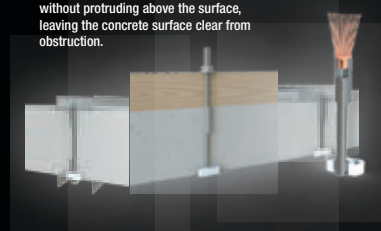
**Sizes**

- |      |       |
|------|-------|
| 1/4  | 7/8   |
| 5/16 | 1     |
| 3/8  | 1 1/8 |
| 7/16 | 1 1/4 |
| 1/2  | 1 1/2 |
| 5/8  |       |
| 3/4  |       |



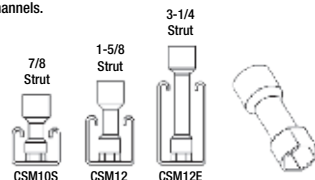
**PT Anchor**

Designed to attach to the concrete form without protruding above the surface, leaving the concrete surface clear from obstruction.



**Dawson  
Channel Socket**

1/2" Drive Socket for use in all brands of strut channel & 1/2" hardware. 3 Sizes for shallow (13/16"), 1-5/8", and deep channels.

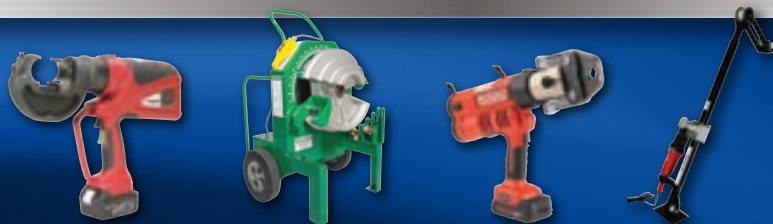


**DEWALT** ENGINEERED BY **Powers**

SCS has the right anchor for even the most high tension jobs



**TOOL RENTAL  
COMING SOON!**



**SPEARS**  
CONSTRUCTION SUPPLY

**HELPING THE JOB GET DONE  
SINCE 1991**

**PORTLAND**

2119 Se 11th Avenue  
Portland, OR 97214

Phone: (503) 239-4000  
salespdx@spearsonline.com

**SERVICE CENTER**

14811 NE Airport Way STE 600  
Portland, OR 97230

Phone: (503) 928-4915  
repairs@spearsonline.com

**KIRKLAND**

13631 NE 126th Place #400  
Kirkland, WA 98034

Phone: (206) 666-8621  
salesWA@spearsonline.com

**SOUTH SOUND**

828 Valentine Ave SE Unit D  
Pacific, WA 98047

Phone: (425) 202-7066  
salesWA@spearsonline.com